

**City of DeWitt, Michigan**

**Municipal Separate Storm Sewer System (MS4) Stormwater Program**

**Progress Report**

January 2014 to April 2016

Submitted to:

**State of Michigan Department of Environmental Quality**

## **Table of Contents**

<b>1.0 General Information</b>	<b>1</b>
<b>2.0 GLRC</b>	<b>1</b>
<b>2.1 GLRC Background</b>	<b>1</b>
<b>2.2 GLRC Members</b>	<b>2</b>
<b>2.3 GLRC Organization</b>	<b>2</b>
<b>2.4 Watershed Partnerships and Related Efforts</b>	<b>4</b>
<b>3.0 Implementation Committee Reports</b>	<b>6</b>
<b>3.1 PEP Committee (including individual community activities)</b>	<b>6</b>
<b>3.2 IDEP Committee</b>	<b>16</b>
<b>3.3 Ordinance/ BMP Committee</b>	<b>17</b>
<b>3.4 Other GLRC Activities</b>	<b>18</b>
<b>4.0 Other Permit-Related Activities</b>	<b>19</b>

## **1.0 General Information**

This progress report is being submitted by the City of DeWitt, Michigan in partial fulfillment of the requirements of the Phase II Stormwater National Pollutant Discharge Elimination System (NPDES) Permit No. MI0059716. The permit allows discharges from a municipal separate storm sewer system (MS4). The Michigan Department of Environmental Quality (MDEQ) requires that a progress report be submitted on the implementation status of the current permit (usually submitted every 2 years). Since the 2008 permit was withdrawn the MDEQ has changed their approach to better serve diverse permittees. In beginning of 2013, the Greater Lansing Regional Committee for Stormwater Management (GLRC) became the first group in the state to go through the revised permit process. This included GLRC members submitting a permit application, serving as the all-encompassing Stormwater Management Program (SWMP). The SWMP replaces the previous Stormwater Pollution Prevention Initiative (or SWPPI). This progress report covers the period of January 2014 – April 1, 2016.

## **2.0 GLRC**

The GLRC is a guiding body comprised of participating permitted MS4 communities within the Greater Lansing Region. The committee has been established to guide the implementation of the MS4 program for the communities within three identified urbanized watersheds: the Grand River, the Red Cedar River and the Looking Glass River Watersheds.

### **2.1 GLRC Background**

In November 1999, nine communities and three counties in the Greater Lansing Area organized to discuss the Federal Regulations for the Stormwater Phase II Program. The result of this organization was an agreement to pool resources on a regional basis to fulfill the requirements of the program. Initially, based on 1990 census population data, these nine communities and three counties were the only entities in the Greater Lansing Area that were designated to participate in the Phase II “Voluntary Permit Program” by MDEQ. Following several meetings of this group during late 1999 and early 2000, a resolution was drafted to establish the “Greater Lansing Area Regional NPDES Phase II Stormwater Regulations Committee” and representatives from each jurisdiction were named to serve on the committee.

Soon after the organization of the Committee in 2000, the Tri-County Regional Planning Commission (TCRPC) began to assist the committee in providing contractual, fiduciary, and administrative support. Tetra Tech was selected to produce a permit strategy study, and later to prepare the Voluntary Grant Permit Applications for each community. Again in 2002, Tetra Tech was retained to prepare watershed management plans (WMPs) for the Grand River and Red Cedar River watershed areas, and would later prepare a WMP for the Looking Glass River watershed area.

Based on the increased population data following the release of the 2000 Census, ten additional communities were designated to meet the stormwater MS4 requirements under Federal and State regulations. Ultimately, seventeen communities and the three counties agreed to participate in a regional approach until April 30, 2008. Most recently the GLRC's

Memorandum of Agreement (MOA) was updated to align with the current permit cycle (2013 – 2017). The updated MOA was adopted by GLRC members and therefore establishes the GLRC legally through April 30, 2017. There are also a number of interested parties that are consistently involved with the planning activities associated with this program such as county park and road commissions/departments, conservation districts, utility authorities, and transportation authorities. The participating communities recognize the substantial benefits that can be derived through cooperative management of the watersheds and achieve the MS4 permit requirements.

## **2.2 GLRC Members**

The participating MS4 entities that currently make up the GLRC are as follows:

- City of DeWitt
- City of East Lansing
- City of Grand Ledge
- City of Lansing
- City of Mason
- Delhi Charter Township
- Delta Charter Township
- DeWitt Charter Township
- Lansing Charter Township
- Meridian Charter Township
- Oneida Charter Township
- Lansing School District
- Windsor Charter Township
- Waverly Community Schools\*
- Clinton County
- Clinton County Road Commission
- Eaton County
- Ingham County
- Michigan State University

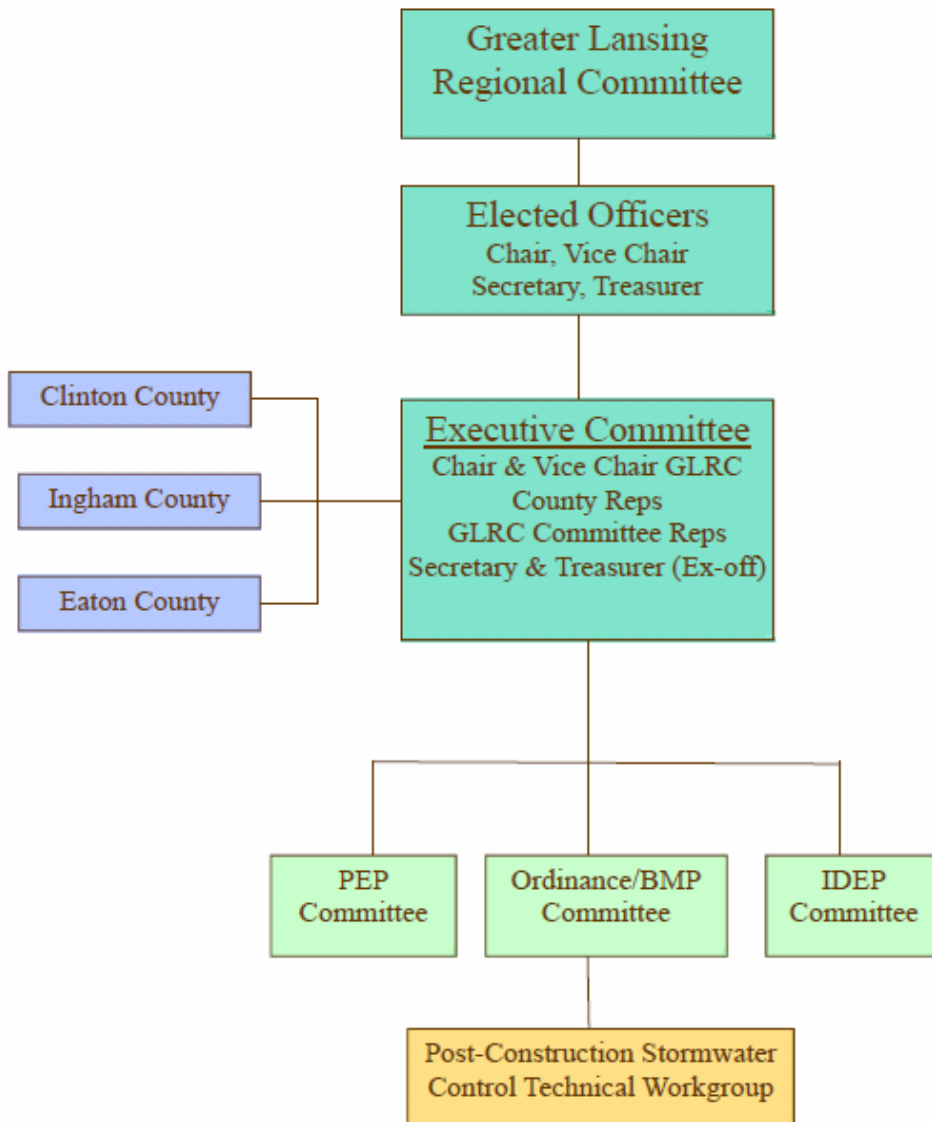
\*Waverly Community Schools joined the GLRC in 2016.

Even though they are not MS4 permittees, Oneida Charter Township and Windsor Charter Township are associate members of the GLRC in order to benefit from the group's efforts to improve stormwater management and reduce pollution within the region. They benefit from the public education materials developed by the GLRC.

## **2.3 GLRC Organization**

Within the GLRC, a number of committees have been established to guide various components of the MS4 program. Other committees may be established as needed throughout the course of the program. A list of the committees including a brief description of their responsibilities follows.

**GLRC organization effective May 1, 2013 - current**



Executive Committee

The GLRC Executive Committee is comprised of a maximum of eight voting members consisting of the Chair and Vice Chair of the GLRC, one representative from each of the three counties, and the chairs of the Illicit Discharge Elimination Program (IDEP) Committee, Public Education Program (PEP) Committee, and Ordinance/Best Management Practices (BMP) Committee. The Executive Committee meets five times a year and the Full Committee meets twice a year.

### Public Education Program (PEP) Committee

The PEP Committee guides the overall public education, participation, outreach, and involvement process. This also includes evaluation of the program and assessment of public knowledge and activities.

### Illicit Discharge Elimination Program (IDEP) Committee

The IDEP Committee guides the organization and implementation of the Illicit Discharge Elimination Program, mapping guidelines, field-sampling protocols, and how the watershed will be monitored for progress. The IDEP Committee has reviewed and provided recommendations related to pet waste reduction techniques, septic tank maintenance issues, staff training and IDEP ordinances.

### Ordinance/Best Management Practices (BMP) Committee

The Ordinance/BMP Committee is responsible for reviewing and making recommendations on updating existing ordinances and developing new ordinances for compliance with the MS4 program. In addition, the committee provides education and technical assistance to GLRC members related to good housekeeping techniques, staff training, low impact development (LID) and BMPs that reduce pollution from runoff.

### Post-Construction Stormwater Control (PCSWC) Technical Workgroup

The PCSWC Technical Workgroup is a workgroup of the Ordinance/BMP Committee and was developed to address post-construction stormwater control requirements. The workgroup developed both a policy and procedures manual and a design standards manual for communities to implement at the local level. In addition, a draft ordinance for post-construction stormwater control was developed and provided to all GLRC members.

## **2.4 Watershed Partnerships and Related Efforts**

### Middle Grand River Organization of Watersheds (MGROW)

MGROW is an outgrowth of the Grand River Expedition 2010, founded in 2011 and established as a 501c3 in February 2012. MGROW is striving to bring together local communities, watershed groups and other stakeholders in the Middle Grand River Watershed to build a greater understanding of and stewardship for our water resources. MGROW's mission: *To protect and preserve the history and the natural resources of the Middle Grand River Watershed by promoting education, conservation, restoration, and wise use of watershed resources.* While the Upper Grand River Watershed Alliance (Jackson area) and the Lower Grand River Organization of Watersheds (Grand Rapids area) assist local watersheds in their respective regions, serving as umbrella organizations to network and share ideas with local watersheds, the Middle Grand River Watershed has been without such support until the formation of MGROW. Local watersheds and program administrators in the MGROW area include: Friends of the Looking Glass River; Friends of the Maple River; GLRC; Middle Grand River Watershed Planning Project; Red Cedar River Watershed Planning Project; local conservation districts; Michigan State University Institute of Water Research (MSU-IWR); TCRPC and Mid-Michigan Environmental Action Council (Mid-MEAC). These groups have been operating independently

from one another but have been exploring avenues for collaboration. The GLRC Coordinator continues to work with MGROW to identify collaborative opportunities related to education, recreation and monitoring. MGROW has established a Grand River Heritage Water Trail (booklet and smart phone application) to bring awareness to historical locations on the Grand River. They have volunteered to maintain the Lansing rain gardens, and supported expeditions on the tributaries of the Grand River. More information can be found on the website: <http://www.mgrow.org/>

#### Looking Glass River Watershed Efforts

Friends of the Looking Glass River Watershed Council host local paddling events and log jam clean ups. The GLRC partners on related events and activities to promote recreation and awareness of the river.

#### Red Cedar River Watershed Management Planning Project (319)

The MSU-IWR was awarded a nonpoint source planning grant for the Red Cedar River in the fall of 2011 and developed a WMP for the Red Cedar River Watershed. The comprehensive plan includes all watershed monitoring data, public education efforts, evaluation and a detailed implementation plan to address pollutants, sources and causes in the watershed. The GLRC supports this effort, by attending meetings, providing data and collaborating on public education ideas (using GLRC survey results). The WMP was approved in October 2015. The TCRPC has applied for an implementation grant to fund the implementation of the WMP. Awards are expected to be announced in the spring of 2016. More information can be found on the website: <http://redcedarriver.weebly.com>

#### Middle Grand River Watershed Management Planning Project (319)

The Eaton Conservation District (ECD) was awarded a nonpoint source planning grant for the Middle Grand River in the spring of 2011. This effort mirrors the Red Cedar River Watershed Management Planning Project and was approved in the spring of 2015. The ECD has applied for funding to implement the Middle Grand River WMP. More information can be found at: <http://www.eatoncd.org/middle-grand-river-watershed.html>

#### Greening Mid-Michigan (GMM)

GMM is a green infrastructure policy/poster plan that was developed and adopted by the TCRPC and partners in 2010. The GLRC has supported this effort both financially and through the participation of the GLRC Coordinator. After a multiple year planning process and over \$90,000 in funding, GMM provides a benchmark and a vision for the communities in Clinton, Eaton and Ingham Counties when it comes to protecting potential conservation areas, connecting parks and trails across jurisdictional boundaries and for promoting sustainable land use policy. GMM gives communities a snapshot of where future conservation activities should occur, where LID would have the largest impact, and where communities can best link their recreation facilities together. Most recently, the GLRC has collaborated on several video public service announcements. They can be found here: <http://www.mitcrpc.org/lup.htm> and here: <http://www.greenmidmichigan.org>.

The region is implementing the GMM vision is through formal adoption of the poster plan by our local jurisdictions. Once the vision is adopted by a community, they can amend their master plan to include GMM language and data sets and they can amend zoning codes to more fully support the recommendations of GMM. GLRC members and partners that have adopted the GMM vision include: Eaton County Board of Commissioners, Clinton County Board of Commissioners, Ingham County Park Commission, Eaton Conservation District, Ingham County Road Department, Delhi Charter Township, Delta Charter Township, Lansing Charter Township, Meridian Charter Township, the City of Lansing, and the City of East Lansing.

### 3.0 Implementation Committee Reports

#### 3.1 PEP Committee (including individual community activities)

The PEP Committee met on the following occasions:

October 16, 2014

November 16, 2015

#### *Committee Activities:*

**Regional Water Quality Survey** – As stated in previous progress reports, the survey results continue to be used as a tool for the PEP Committee regarding all educational efforts and public participation. Surveys were conducted in 2006 and 2012. The 2012 survey provided comparison data; demonstrating where we have made progress through our educational efforts and identifying areas that need improvement. The survey results can be found on the GLRC website here: <http://mywatersheds.org/resources/publications/>

**Pollution Isn't Pretty (PIP)** - Originally funded by TCRPC's, Mid-Michigan Program for Greater Sustainability; MGROW has facilitated the use of the water resource education campaign titled: Pollution Isn't Pretty. The PIP campaign was professionally designed and is being used consistently across the region. For more information visit the website: <http://www.pollutionisntpretty.org>





**Watershed Pet Waste Signs** – In partnership with MGROW and the ECD, the GLRC distributed 46 alluminum pet waste signs. The ECD distributed nearly 250 signs. The following GLRC members have placed the signs in their communities: Lansing Charter Township (3), City of East Lansing (19), Ingham County Parks (5), Clinton County Parks (2), DeWitt Charter Township (3), Meridian Charter Township (4), City of Lansing (5), City of Grand Ledge (4), and MSU (1). Several signs have also been placed on the Lansing River Trail.

The City of DeWitt has consistently maintained 6 original watershed pet waste signs throughout the community.



**GLRC Exhibit Display** – The traveling exhibit display was developed in 2008 and has been used extensively at local workshops, conferences, community lobbies, etc. When the display is not being used for a special event, it travels throughout the region at GLRC member offices. The GLRC display panels were redesigned in 2014 to incorporate the PIP campaign. In addition to the display itself, copies of GLRC publications and watershed brochures are handed out to interested parties.

The GLRC display has been utilized by several members. See the detailed list below:

Name	Community	Date Provided	Date Returned	Event
<b>2014</b>				
Erin Campbell	GLRC	March 1, 2014		Quiet Water Symposium (2,400*)
Allen Bryant	Delhi Twp	March 20, 2014	March 21, 2014	Lawn Care Seminar
Erin Campbell	GLRC	March 26, 2014		MWEA Watershed Summit
Bill Brunner	City of Lansing	April 11, 2014	April 17, 2014	City Hall
Erin Campbell	GLRC	May 3, 2014	May 3, 2014	Adopt A River (800*)
Allen Bryant	Delhi Twp	May 10, 2014	May 12, 2014	Wastewater Open House
Erin Campbell	GLRC	May 29, 2014		SCCMUA Open House
Erin Campbell	GLRC	June 13, 2014	June 14, 2014	Fish Rodeo (2 days – 450*)
Younes	Meridian Twp	June 16, 2014	June 18, 2014	Lake Lansing meeting
Ruth Kline- Robach	MSU	July 21, 2014	July 25, 2014	MSU Ag Expo
Harmony Gmazel	TCRPC/GLRC	July 27, 2014	August 2, 2014	Ingham County Fair (6 days – 40,000*)
Meredith Baker	Grand Ledge	October 10, 2014	October 15, 2014	Color Tour
Bill Brunner	City of Lansing	October 27, 2014	October 31, 2014	City Hall
Ruth Kline- Robach	MSU	November 7, 2014		MSU Autumn Festival

<b>2015</b>				
Erin Campbell	GLRC	March 7, 2015		Quiet Water Symposium (2,700*)
Erin Campbell	GLRC	March 25, 2015		MWEA Watershed Summit
Bill Brunner	City of Lansing	April 27, 2015	May 1, 2015	City Hall
Erin Campbell	GLRC	May 19, 2015		Adopt A River (500*)
Allen Bryant	Delhi Twp	May 13, 2015		Wastewater Open House
Erin Campbell	GLRC	May 28, 2015		SCCMUA Open House
Erin Campbell	GLRC	June 12, 2015	June 13, 2015	Fish Rodeo (2 days of display)
Younes	Meridian Twp	June 1, 2015	June 4, 2015	Lake Lansing meeting
Bob Scheuerman	East Lansing	September 9, 2015	October 2, 2015	East Lansing area (Hannah, City Hall)
Meredith Baker	Grand Ledge	October 6, 2015	October 13, 2015	Color Tour
Bill Brunner	City of Lansing	October 27, 2015	October 30, 2015	City Hall

<b>2016</b>				
Dennis Glew	Lansing School District	January 29, 2016	February 1, 2016	Lansing School District Showcase
Erin Campbell	GLRC	March 5, 2016		Quiet Water Symposium
Erin Campbell	GLRC	March 29, 2016		MWEA Watershed Summit

\*Approximate number of people at the event

The City of DeWitt, along with DeWitt, Bath and Watertown Charter Townships are constituent members of SCCMUA and thus are represented by virtue of the annual display at the SCCMUA Open House.



**GLRC Logo** – the GLRC logo was updated in 2014 to include the color palette of the PIP campaign.



**Education and Outreach Library** – The library was developed on the website to allow GLRC members and the public to review files for education purposes. These files include brochures, presentations, press releases and other information that municipalities may wish to use to promote our purpose. The website continues to be updated regularly to include many educational materials to encourage public involvement and education.

**For Educators Webpage** – The PEP Committee maintains a webpage on the GLRC website for educators in the region. The page serves as a resource guide for local teachers, workshop leaders, or anyone interested in environmental education. State and federal environmental curriculum is highlighted as well as links to local resources for field trips, in-classroom presentations, etc. It includes resources and example projects that the schools can integrate into their current activities. The webpage also serves as a toolbox for teachers and school

district officials that are required to meet MS4 permit requirements. This page continues to be updated on a regular basis.

**Environmental Education Curriculum** – The Michigan Environmental Education Curriculum Support (MEECS) provides environmental curriculum to all school districts in Michigan. The MEECS curriculum is posted to the GLRC website.

**Template News Articles** – The PEP Committee continues to use and promote a series of news articles. They are posted on the GLRC website so GLRC members can easily access them to periodically include in their local community newspapers. The articles cover the following topics:

What is a Watershed?	Pet Waste
Riparian Areas	Storm vs. Sanitary Sewer
Who/What is the GLRC	Car Washing Article
Onsite Septic System	Adopt Your Catch Basin
Fertilizer	Illicit Discharge
Vehicle Maintenance	Wetlands

A suggested time line for seasonal articles is also provided.

**Children’s Water Festival** – The TCRPC Groundwater Management (GMB) Board sponsors the annual Children’s Water Festival. The festival educates local fourth, fifth, and sixth grade students each year through hands-on activities related to surface and groundwater protection and conservation. The 18<sup>th</sup> annual Children’s Water Festival was held on May 6, 2014 and over 1,300 students attended. There were over 40 presentations for students from 50 water resource professionals; in addition over 30 volunteers to help manage the event. In 2015 the GMB decided to partner with the Michigan State University Science Festival, which reaches over 30,000 people. With rising administrative costs and logistics of the festival, the GMB felt more students could be reached while still achieving the goal of water resource education.

**Adopt A River** – The GLRC display was part of the environmental fair at the Adopt A River events held on May 3, 2014 and May 9, 2015. A demonstration of stormwater runoff flowing over the land (using playdough and water in a large pan) was an activity we added to make the public interaction more hands on. The GLRC was also included in the Passport, which encouraged participants to visit all booths of the environmental fair to be entered in a drawing for prizes, etc. Over 500 residents participate in this event each year.

**Billboard Public Service Announcement (PSA)** – In 2014 the PEP Committee partnered with the ECD to have 10 billboards displayed across the urbanized area. The PIP campaign was used. The following table describes the number of average daily traffic that physically traveled by the billboards while they were displayed.

**Billboard Statistics - March 3, 2014 - May 14, 2014**

2014	Location Description	Average Daily Traffic	No. of Days	Total Traffic
Location 1	Larch St/Kalamazoo St	12,700	72	914,400
Location 2	Holmes Rd/Washington Ave	8,774	72	631,728
Location 3	Lansing Rd/Canal Rd	12,100	72	871,200
Location 4	Grand River Ave/DeWitt St	13,600	72	979,200
Location 5	Cedar St/Willoughby Rd	45,853	72	3,301,416
Location 6	Pennsylvania Ave/Tisdale St	13,400	72	964,800
Location 7	MLK Blvd/Haag	18,100	72	1,303,200
Location 8	Lansing Rd/Waverly Rd	7,900	72	568,800
Location 9	I-96/Jones Rd	40,600	72	2,923,200
Location 10	East St/Fredrick St	14,300	72	1,029,600

**Total number of traffic for length of campaign: 13,487,544**

Average Daily Traffic Counts provided by Tri-County Regional Planning Commission



**Radio Show** – The GLRC Coordinator was on the local 92.9 FM WLMI Tim Barron morning show on April 11, 2014, July 10, 2014, October 16, 2014, and March 16, 2015. Topics that were discussed included septic tanks, fertilizer use, leaf pick up, reporting spills and overall awareness of our rivers and streams.

**PIP Movie Theater Ads/PSA** – The GLRC worked with Clear Water Media to develop four, 15-second public service announcements. They are used on social media, websites, etc. They were shown at the local movie theaters (Studio C, Celebration Cinema and the Lansing Mall NCG) in October and November of 2015. In addition, the Charlotte Allive Center and Charlotte Public Schools Public Access channel ran the videos. They can be viewed here: [https://www.youtube.com/channel/UCm-2OdB67N\\_dSAnR5osYSFw](https://www.youtube.com/channel/UCm-2OdB67N_dSAnR5osYSFw).



**Storm Drain Art Awareness** – The GLRC and ECD partnered with the City of Lansing and the REACH Studio Art Center Teen Open Studio to complete four murals around storm drains in the urbanized area. The murals are in close proximity to the Grand River. The GLRC Coordinator gave a presentation to the teen artists on stormwater, how it is managed through the MS4 and why it is important to protect our rivers. You can learn more about the project here: <https://www.youtube.com/watch?v=HHU1VsXxnJ4>. The murals are expected to last approximately 5-7 years with re-sealing every couple of years.



**City Pulse Advertisements** – In partnership with the ECD, the GLRC purchased ad space in the Lansing City Pulse for the months of January and February 2016. The ads include ¼ page space and 30 days of an online ad was included. The images change every week and are from the PIP campaign. The City Pulse has an audience of over 50,000 readers each week for the weekly print newspaper and over 30,000 people each week online. They have over 500 distribution locations in the Greater Lansing area.

**Public Presentations** – The following public presentations were given by the GLRC Coordinator within the reporting period:

- August 18, 2014: Presented the Totally Topography activity to 25 young students at the Educational Child Care Center in Lansing. The activity demonstrates runoff using play dough in pans and making it rain with spray bottles.
- October 17, 2014 and September 23, 2015: The TCRPC hosted two Ultimate Mid-Michigan Bus Tours for elected officials to tour the region and learn about green infrastructure, downtown redevelopment, local farming initiatives, etc. The GLRC Coordinator shared the importance of stormwater and natural resource management on both tours. Over 50 people attended each tour.

- November 12, 2014: Provided the TCRPC Program and Grant Committee with an overview of the Pollution Isn't Pretty campaign.
- January 22, 2015: Presented on GLRC and MGROW activities at the TCRPC Sustainability Symposium. Over 100 people attended.
- May 1, 2015: Participated in a panel discussion with the City of Lansing to answer general stormwater questions at the Michigan Environmental Council – Mid-Michigan Regional Meeting.
- June 23, 2015: The GLRC Coordinator was presented with the Michigan Water Environment Association (MWEA) Watershed Management Professional of the Year award at the MWEA annual conference.
- August 26, 2015: Presented to the Kiwanis Club of Mason Golden K about stormwater management, what the GLRC does, and what homeowners can do to reduce pollution. About 30 people attended.
- September 17, 2015: In partnership with the ECD and several others we participated in a Celebrate Our Rivers event on the MI Princess Riverboat. The GLRC Coordinator shared the message about the work our municipalities are doing to protect stormwater water and our local rivers. Over 130 people attended.
- November 19, 2015: Shared the REACH Studio Art Center storm drain awareness project video with the TCRPC Commissioners and the teens were presented with a resolution of recognition for their efforts.
- March 10, 2016: Presented to over 75 students at the MSU Science Festival about stormwater runoff using the Totally Topography activity.
- March 29, 2016: Presented at the MWEA Watershed Summit about ordinance manuals and different land use policy recommendations for protecting water quality.

**GLRC Annual Report** – The first GLRC Annual Report was developed in early 2012 (reporting on 2011). The intent of the 10-page report is for GLRC members to share it with their boards, councils and commissions in order to demonstrate the work that has been done throughout the year. TCRPC also shares the report with all commissioners and uses it to provide several different audiences with an overview of GLRC activities. The effort continues with reports developed through 2015.

**GLRC Quarterly Newsletters** – The GLRC began publishing quarterly newsletters in January 2010 and continues to do so. The newsletters are posted on the GLRC and TCRPC websites and are shared through an email distribution list of over 150 stakeholders. It is recommended that GLRC members share the newsletters with elected officials and appropriate boards, councils and commissions.

The City of DeWitt maintains a page dedicated to “Watershed Management Efforts” on its municipal website. Links to the GLRC quarterly newsletters are provided, and include all quarterly reports for 2014 and 2015.

**GLRC Fact Sheets** – A fact sheet describing locations for campers to dump their travel trailer waste was developed. The GLRC fact sheet that provides an overview of the group and six minimum measures was updated to utilize the PIP campaign. The fact sheets can be found here: [http://mywatersheds.org/wp-content/uploads/2015/07/GLRC\\_RV-Dumping-Site-Directory.pdf](http://mywatersheds.org/wp-content/uploads/2015/07/GLRC_RV-Dumping-Site-Directory.pdf)  
[http://mywatersheds.org/wp-content/uploads/2015/02/GLRC-Fact-Sheet\\_new.pdf](http://mywatersheds.org/wp-content/uploads/2015/02/GLRC-Fact-Sheet_new.pdf)

**Social Media** – The GLRC joined Facebook and Twitter in December 2009. Regular posts/updates are related to watershed stewardship, public involvement and participation. GLRC and partner events are also posted frequently. Currently 113 people “like” the GLRC on Facebook (an increase of 67 since 2013) and we have 229 “followers” on Twitter (an increase of 212 since 2013). The committee hopes to strengthen our presence through these avenues in the future. We have started purchasing Facebooks ads to boost some messages directing people to our website. See our pages here: <https://www.facebook.com/GLRC4stormwater/> and <https://twitter.com/GLRC4stormwater>.

**GLRC Website [www.mywatersheds.org](http://www.mywatersheds.org)** – The public website for the GLRC is maintained and updated on a regular basis. The website includes a significant amount of information relating to watersheds, stormwater stewardship, GLRC reports, educational information, links to other environmental organizations and much more. All public education outreach materials direct the viewer to our website so we can further educate them about pollution prevention. The website was updated in the spring of 2015 and has been re-designed to be visual complimentary to the PIP campaign and to be more user-friendly.

The PEP Committee reviews the website stats on a regular basis. In 2014 the website had 3,861 page views (an increase of 691 views from 2013) and 1,738 visitors (an increase of 328 from 2013). In 2015, the website had 7,115 page views (and increase of 3,254 from 2014) and 4,412 users (and increase of 2,674 from 2014). There has been a significant increase in website traffic with the new website re-design and our continued multimedia approach.

On July 30, 2015, a Website Workshop was held for GLRC and their communications staff (18 people attended). The workshop included what members should have on their websites for



compliance and how the GLRC and community websites can link with each other and share in social media efforts.

As noted earlier, the City of DeWitt maintains a separate page dedicated to “Watershed Management Efforts” on its municipal website. In addition to posting the GLRC quarterly newsletters, the page explains the importance of its position within the Middle Looking Glass River watershed. It also provides a link to the GLRC website <http://mywatersheds.org> and the Friends of the Looking Glass River website <http://www.lookingglassriverfriends.org>.

**Calendar Updates** – The committee is continuously updating the GLRC calendar with applicable meetings, webinars, educational opportunities, and recreation and cleanup activities throughout the watersheds.

**General Outreach/Education Efforts** – The GLRC Coordinator partners with several different groups, agencies, and organizations in the region. Here is a summary of general collaboration and activities related to stormwater and pollution prevention:

- MWEA Watershed Committee – GLRC Coordinator has been attending all MWEA Watershed Committee meetings and provided some support to the group related to the MS4 permit application process. This is a good networking opportunity for the GLRC to share our experiences and learn what others are doing around the state.
- December 2014; 2015 – Promoted annual MWEA Watershed Seminar. GLRC Coordinator attended.
- March 2014; 2015; 2016 – GLRC display was on exhibit at the MWEA Watershed Summit.
- March 2014 – Provided letter of support to Mid-MEAC regarding a grant application to MiCorps Volunteer Stream Monitoring Program.
- August 2014 – Provided 25 posters to the Grand Learning Network to share with their partner schools. Posters were displayed in classrooms and lobbies.
- May 2015: Attended three training sessions (over 12 weeks) from Water Words that Work LLC. The sessions focused on improving education and outreach, finding the target audience, using appropriate language, etc.
- August 2015: Provided input, guidance, and recommendations for the TCPRC report: *Tri-County Water Policies & Programs Guide*. The report can be found at: <http://www.mitcrpc.org/env.htm>

- August 2015: The Bill Earl Fishing Map was printed and the GLRC provided language and PIP graphics to discuss the importance of riparian buffers. Five thousand copies have been printed.
- August and October 2015: HOMTV interviewed the GLRC Coordinator twice. Topics included stormwater management and pet waste management.
- January 2016: Provided letter of support to Ingham Conservation District in support of a Red Cedar River Clean-up grant application.
- The GLRC Coordinator has consistently provided notices to GLRC members regarding anything relevant to the MS4 program including seminars, training, webinars, legislative updates, etc.

### 3.2 IDEP Committee

All GLRC members are well into implementation of their individual IDEP programs. The GLRC Coordinator is partnering with the local watershed management planning efforts to expand efforts related to pet waste reduction techniques, on-site septic system management, and other ways to reduce illicit connections. Providing staff training for GLRC members is the main focus of the Committee.

The IDEP Committee met on December 3, 2015 for a roundtable discussion and staff training. The Excal Video: *Illicit Discharge Detection & Elimination: A Grate Concern* video was shown to the 39 attendees.

City of DeWitt DPS Supervisor Rich Miller participated in the staff training and borrowed available resources to share with other City staff and personnel.

#### *Committee Activities:*

**IDEP Training Video** – GLRC Members borrow the video to conduct their own training as described below:

<b>Name</b>	<b>Community</b>	<b>Date Provided</b>	<b>Date Returned</b>
Angie Cosman	Ingham Co. Drain office	May 21, 2014	May 21, 2014
Rich Miller	City of DeWitt	June 3, 2014	July 16, 2014
Meredith Baker	Grand Ledge	October 6, 2014	March 20, 2015
Dennis Glew	Lansing School District	March 23, 2015	October, 2015
Erin Campbell	GLRC Staff Training	December 3, 2015	
Bob Scheuerman	City of East Lansing	December 3, 2015	January 20, 2016
Erin Campbell	DeWitt Twp & City of DeWitt	January 21, 2016	
Rich Miller	City of DeWitt	January 21, 2016	Forwarded to Delhi Charter Township March 2016

City of DeWitt DPS Supervisor Rich Miller shared the IDEP Training Video for viewing/training with the entire DPS staff, as well as new City Hall staff, new City Police Officers (assist in issuing civil violations, if required) and the 2 employees of the Downtown Development Authority.

### 3.3 Ordinance/ BMP Committee

The Ordinance/BMP Committee’s main function is to provide guidance related to facility inspections and conduct staff training. This is done in conjunction with the IDEP Committee staff training. On December 3, 2015, the IDEP Committee met and conducted staff training for both IDEP and good housekeeping techniques. The Excal Video: *Rain Check: Stormwater Pollution Prevention for MS4s* was shown to the 39 attendees.

#### *Committee Activities:*

**MDEQ Industrial Stormwater Operator Training** – On May 28, 2015, 24 people attended the MDEQ training to certify new Industrial Stormwater Operators and recertify existing Industrial Stormwater Operators. The GLRC Coordinator was recertified through this training.

City of DeWitt Supervisor Rich Miller attended the training and renewed his MDEQ Stormwater Operating certification through July 1, 2020.

**Good Housekeeping Training Videos** - GLRC Members borrow the video to conduct their own training as described below:

<b>Name</b>	<b>Community</b>	<b>Date Provided</b>	<b>Date Returned</b>
Angie Cosman	Ingham Co. Drain office	May 21, 2014	May 21, 2014
Rich Miller	City of DeWitt	June 3, 2014	July 16, 2014
Meredith Baker	Grand Ledge	October 6, 2014	March 20, 2015
Dennis Glew	Lansing School District	March 23, 2015	October, 2015
Erin Campbell	GLRC Staff Training	December 3, 2015	
Bob Scheuerman	City of East Lansing	December 3, 2015	January 20, 2016
Erin Campbell	DeWitt Twp & City of DeWitt	January 21, 2016	
Rich Miller	City of DeWitt	January 21, 2016	Forwarded to Delhi Charter Township March 2016

City of DeWitt DPS Supervisor Rich Miller included the Good Housekeeping Training Video at the same time as the IDEP Training Video to those noted earlier.

**GLRC PCSWC Manuals** – In February 2011, the PCSWC Technical Workgroup provided GLRC members with the template PCSWC manuals for both design standards and policy/procedures. This effort also included a draft ordinance. This regional approach creates an equitable environment for future development and redevelopment that meets federal permit

requirements. GLRC Members have implemented these guidelines into their site plan review and development processes.

On October 28, 2014, the DeWitt City Council adopted a revision to its stormwater management ordinance to maintain compliance with the revised MS4 NPDES Stormwater Permit. The ordinance revision addressed specific qualitative and quantitative water quality criteria. Documentation of the revisions was submitted to the MDEQ, which deemed the application complete and a revised permit subsequently executed.

### **3.4 Other GLRC Activities**

#### **Water Quality Mapping Database**

Data management is an important part of evaluating success and challenges in the watersheds. The committee has been maintaining the water quality database originally created in 2007 with GIS capability. The main purpose of the database is to organize past, current, and future water quality data in conjunction with available land use data to help protect and improve water quality in the region. The database is primarily used for viewing current information in a comprehensive, visual format. The Red Cedar River Watershed Implementation grant has asked for funding to create a regional water quality task force that will bring together all agencies and organizations conducting surface water sampling to help coordinate efforts.

#### **Ingham County Surface Water Program**

The Ingham County Health Department tests regular sites for *E.Coli*, they have been sampling through this program for over 10 years. The GLRC continues to gather the data for inclusion in our water quality database.

#### **Recreation Efforts**

The GLRC promotes partner efforts and recreational events through the website and social media.

The City of DeWitt and DeWitt Charter Township jointly comprise the DeWitt Area Recreation Authority (DARA) whose website is accessible directly via <http://www.dewittrecreation.org> or by link from the City's website page. Both websites, as well as the Friends of the Looking Glass River, highlight related recreation activities such as the annual Kayak Launch.

In addition, the City of DeWitt continues to work with DeWitt Public Schools and DeWitt Charter Township to expand its non-motorized trail network across the region. The MDOT Transportation Alternative Program is funding a 1.5 +/- mile, shared-use trail extending from the DeWitt Public Schools along Herbison Road to Old Route US-27.

#### **4.0 Other Permit-Related Activities**

##### **IDEP Evaluation**

*For the IDEP, provide a summary of the evaluation and determination of the overall effectiveness of the IDEP, using the evaluation methods described in the IDEP. For each illicit discharge that was not eliminated within 90 days of its discovery the permittee shall provide a written certification that the illicit discharge was eliminated or a description of how the illicit discharge will be eliminated. If applicable, the permittee shall submit to the Department any new outfall or point of discharge information as required in Part I.A.2. of this permit.*

An outfall previously identified along the Dill Road corridor during the 2011-2013 permit reporting cycle found to contain no illicit discharges was eliminated in 2014.

The City of DeWitt completed its annual IDEP outfall investigation again in summer 2014. The effort identified a new outfall along the West Geneva Road corridor. It was investigated and found to discharge surface runoff only with no illicit discharge connections. City outfall mapping has been updated accordingly, including outfalls from the DeWitt Public Schools property as committed to in the prior progress report.

Through these findings, the IDEP has been found adequate requiring no revisions. A new DPS employee hired within the last two years has been trained in all related procedures.

The 2015 outfall investigation was not able to be completed due to constant weather delays.

The City of DeWitt committed approximately \$150,000 as a 10% match to a Stormwater Asset Management Wastewater (SAW) Grant awarded by MDEQ. The project includes a comprehensive condition assessment of structures and pipes in both the storm drain and sanitary sewer systems. Field data gathering continues with condition assessments in progress. The work will further enable the City to inventory its system and maintain integrity to avoid cross-connections and illicit discharges.

##### **Pollution Prevention and Good Housekeeping Program (PPGHP)**

The City of DeWitt PPGHP was revised in October 2014 to identify facilities with a high potential to discharge pollutants. The City has since constructed a new fueling area at the DPS Fleet and Maintenance Yard. Built in compliance with MDEQ standards and guidelines, the City prepared a 3-page Standard Operating Procedure (SOP) required to be read and signed by all DPS staff. A new IDEP Spill Kit was purchased in conjunction with the new facility and incorporated into the SOP and annual IDEP training.

In conformance with PPGHP provisions, all City streets were swept a minimum of two times per year throughout 2014 and 2015. In addition, all curbed roads were swept a minimum of one time per month.

### **Data and Results**

*The permittee shall provide a summary of all of the information collected and analyzed, including monitoring data, if any, during the reporting cycle.*

No discharges were noted in the 2014 outfall investigation including both City and School outfalls, and thus no testing was required.

### **Upcoming Activities**

In addition to compliance with current provisions of the GLRC Action Plan, the City of DeWitt intends to complete the following during the next reporting cycle:

- Replace current watershed pet waste signs with the newer designs and work with DeWitt Public Schools to place additional signage on school property.
- Include the GLRC Exhibit Display at the 5<sup>th</sup> Annual DeWitt Community Showcase scheduled for Thursday, April 14, 2016, as well as the 2017 event assuming it is continued.
- Coordinate with the DeWitt Public Schools which has committed to purchasing its own IDEP Spill Kit in 2016.
- Work with the DeWitt Public Schools to conduct sweeping of its school parking lots during spring break 2016.

### **Changes to BMPs and Measurable Goals**

*The permittee shall describe any changes to BMPs or measurable goals in the approved SWMP. In accordance with the permit, these changes will be reviewed to determine if a permit modification is necessary. The Department will notify the permittee if a permit modification is required.*

In accordance with the revolving cleaning schedule identified in the updated PPGHP, the City of DeWitt inspected and cleaned 50 catch basins in 2014 and 56 in 2015. The increase was due in part to honoring its commitment to remove siltation at a minimum depth of 12 inches versus the previous 18-inch depth threshold.

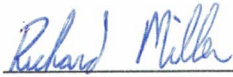
### **Notice of Changes in Nested Jurisdiction Agreements**

*The permittee shall identify any nested jurisdictions that enter into or terminate permit agreements with the permittee which were not identified in the SWMP. The permittee may request to modify the permit coverage to add or remove a nested MS4 by submitting a request to the Department for approval in accordance with Part I.A.1.b. of this permit. Modifications to the permit coverage may result in a permit modification, after opportunity for public comment.*

**This page intentionally left blank.**

**Required Signatures**

*All reports required by this permit, and other information requested by the Department, shall be signed by either a principal executive officer or ranking elected official, or by a duly authorized representative of that person in accordance with 40 CFR 122.22(b).*



---

Richard Miller, Supervisor  
City of DeWitt, Department of Public Services